

# Aircraft and Medical Instruments

U.M.A., Inc 260 Main St., P.O. Box 100

Dayton, Virginia 22821

Phone (540)879-2040

FAX: (540) 879-2738

E-mail [umainc@umainstruments.com](mailto:umainc@umainstruments.com)

Web Site <http://www.umainstruments.com>

## INSTALLATION INSTRUCTIONS N1EUxxx(A/G/D/S)\* PRESSURE SENDER

### INSTALLATION

MOUNT UNIT TO ENGINE WITH 1/8" NPT NIPPLE OR MOUNT ON BULKHEAD, PREFERRED, AND RUN A CONNECTING HOSE TO UNIT. THE UNIT IS RATED TO 120°C SO CARE SHOULD BE TAKEN TO KEEP UNIT AWAY FROM HIGH HEAT SOURCES.

### WIRING

USE #24 OR #22 SHIELDED WIRE. USE TEFLON INSULATED TYPE IF ROUTED IN AREAS OVER 100°C

RED — +12VDC FROM INDICATING UNIT, REGULATED

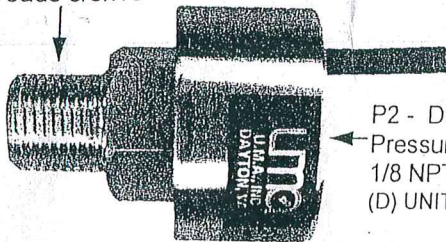
BLACK — GROUND

WHITE — SIGNAL TO INDICATING UNIT

SHIELD—CONNECT TO GROUND AT INDICATING UNIT.

Mounting threads 5/8x18

P1 - WET SIDE Pressure Fitting 1/8 NPT Female Vacuum conn. On (S) types



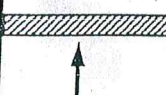
P2 - DRY SIDE Pressure Fitting 1/8 NPT Female (D) UNITS ONLY

\*TYPE G UNITS ARE GAUGE READING  
TYPE D UNITS ARE DIFFERENTIAL  
TYPE A UNITS ABSOLUTE  
TYPE S UNITS SUCTION GAUGE

### CONNECTION DIAGRAM

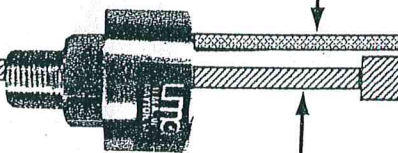
3 cond. Shielded cable

ENGINE OR OTHER SYSTEM TO BE MEASURED



P1

1/8" NPT Nipple or Connecting hose



P2

CONNECTING HOSE TO LOW SIDE PRESSURE SOURCE FOR DIFFERENTIAL MEASUREMENT ONLY. TYPE (D) UNITS. DO NOT PUT LIQUID IN THIS PORT.

### INDICATING DEVICE

ORANGE/WHT +12VDC IN from Pin3  
WHITE SIGNAL OUT to pin5  
BLUE/WHITE GROUND Pin8&9 (-)  
SHIELD GROUND Pin8&9 (-)

power buss

## SPECIFICATIONS

SUPPLY VOLTAGE	+12VDC REGULATED
OUTPUT	.2 - 4.7VDC (calibration specific to model)
CURRENT DRAW	10 MA.
OPERATING TEMP.	-55°C to 120°C
ACCURACY	±2.5% FULL SCALE
PRESSURE FITTINGS	1/8" NPT FEMALE
MOUNTING THREADS	5/8" X18
PRESSURE LEVEL	P1 GREATER THAN P2
MEDIA COMPATABILITY	P1 LIQUID OR DRY P2 DRY ONLY
LIQUID TYPES	OIL-AVGAS-JETFUEL -WATER AND OTHERS THAT ARE NOT CORROSIVE TO ALUMINUM

## MODELS

PART #	RANGE	MAX. PRESSURE
N1EU07x	7 PSI	29 PSI
N1EU35x	35 PSI	145 PSI
N1EU70x	70 PSI	290 PSI
N1EU100x	100 PSI	406 PSI
N1EU150x	150 PSI	580 PSI
N1EU50A	5-59 In. Hg.	236 In. Hg.
N1EU70A	5-70 In. Hg.	236 In. Hg.
N1EU07S	14 In. Hg.	60 In Hg.