

Item # MK1000-3, MK1000 - Anchor Nut Miniature, Two-Lug, Fixed

THREAD: AS8879

MATERIAL: C1050 Carbon steel, heat treated Rc. 49 max.

FINISH:

- MK1000-(*) Cadmium plate per AMS-QQ-P-416, Type II, Class, plus Kaylube molybdenum disulfide dry lubricant coat per AS5272.

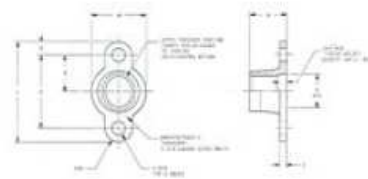
- MK1000X(*) Cadmium plate per AMS-QQ-P-416, Type II, Class.

- MK1000-(*)CW Cadmium plate per AMS-QQ-P-416, Type II, Class, plus carbowax.

PERFORMANCE: NASM25027.

TEMPERATURE: 450°F.

VARIATIONS: Add "BC" for bottom countersunk rivet holes. Example: MK1000-3BC.



Specifications

Thread	0.1900-32 UNJF-3B
A ± .005	0.250
B - REF	0.107
C ± .002	0.500
D - MIN	0.194
H - MAX	0.220
K +.005 / -.000	0.098
L - MAX	0.724
V - REF	0.032
W - MAX	0.328
Approx. Weight (LBS/100)	0.200
Bottom countersunk rivet holes	No
Finish	Cadmium Plate per AMS-QQ-P-416, Type II, Class plus Kaylube Molybdenum Disulfide Dry Lubricant Coat per AS5272
Thread Type	Unified
Configuration 1	Two Lug
Configuration 2	Fixed
Configuration 3	Miniature
Lock	Crimp Lock
Simplified Material	Alloy Steel
Strength	125KSI - 900Mpa
Temperature	450°F - 235°C
Thread	0.1900-32 UNJF-3B