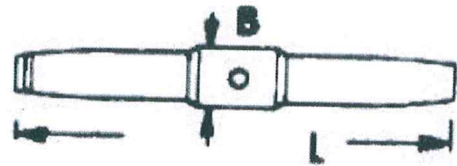
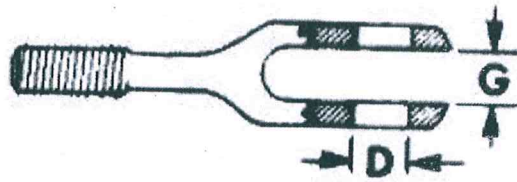


## TURNBUCKLE PARTS DIMENSIONS

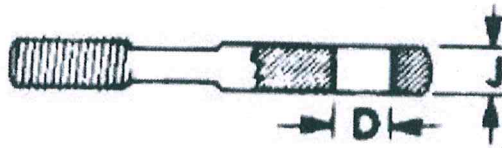
The "R" or "L" following the dash number designates "right" or "Left." The "S" or "L" (2nd letter following dash number) indicates "short" or "long." AN 161 Fork and AN 170 Cable Eye are available with either right or left-hand thread.



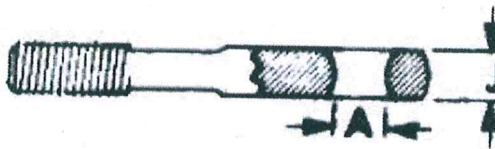
**AN155  
BARREL**



**AN161  
FORK**



**AN165  
PIN EYE**



**AN170  
CABLE EYE**

Dash No.	Thread Size	AN 155 Barrel		AN 161 Fork		AN 165 Pin Eye		AN170 Cable Eye	
		"L"	"B"	"G"	"D"	"J"	"D"	"J"	"A"
-8S	6-40	2-1/4	.250	.109	.188	.125	.188	.125	.188
-16S	10-32	2-1/4	.344	.156	.188	.1625	.188	.188	.219
-16L	10-32	4	.344	.156	.188	.1625	.188	.188	.219
-22S	1/4-28	---	---	.187	.188	.188	.188	.188	.219
-22L	1/4-28	---	---	.187	.188	.188	.188	.188	.219
-32S	1/4-28	2-1/4	.438	.218	.250	.219	.250	.219	.281
-32L	1/4-28	4	.438	.218	.250	.219	.250	.219	.281
-46S	5/16-24	2-1/4	.500	.250	.313	.281	.313	.281	.313
-46L	5/16-24	4	.500	.250	.313	.281	.313	.281	.313
-61L	3/8-24	---	---	.270	.375	.281	.375	.281	.344
-80L	3/8-24	4	.625	.312	.375	.328	.375	.328	.375